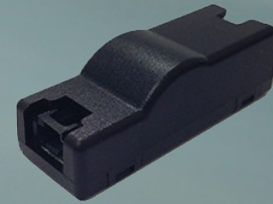




eData



Ultimate Vehicle Diagnostic Tool

eData is a simple to use vehicle diagnostic tool, designed for advanced vehicle analysis in real-time, with customizable notifications of the vehicle's state of health.

The eData comes with a user-friendly software interface to enable easy rule and notifications setting for any combination of parameter values (being broadcasted over the CAN bus or OBD CAN).

The CANbus integration enables to offer advanced telematics services such as monitoring engine temperature, gear state, DTC (diagnostic trouble codes), oil pressure and temperature, safety features and many more parameters running on the CAN wires during the operation of the vehicle.

The eData uses advanced histogram technology, that creates a 3-dimensional analysis over CAN parameters for deep understanding on the vehicle's performance.

The **eData** offers:

- Simple connectivity to vehicle OBD / CAN
- Extraction and analysis of vehicles standard CANBUS parameters
- Extraction and analysis of additional vehicle data using non-intrusive CANBUS reader
- An intuitive alerting and reporting mechanism based on a flexible, combined-parameter rules engine

Key Features:

- OBD or CANBUS/FMS information extraction
- Parameters use:
 - support OBDII protocol
 - ability to define additional parameters read from CANBUS
- User friendly rules engine for alerting events to use with:
 - Predefined parameters
 - Additional manually CANBUS extracted parameters
- 3-dimensional histogram reporting:
 - Up to 10 histograms per trip (ignition on/off)
 - Up to 5 parameters per histogram
- Dynamic OBD Protocols Support:
 - OBD II | VPW | PWM | K-Line | CANBUS
- J1708, J1939 protocol support
- Communication protocol support: Binary, Textual